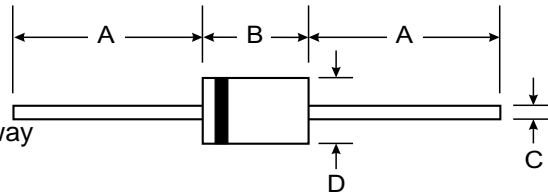


Features

- Plastic package has Underwriters Laboratory Flammability Classification 94V-O utilizing Flame Retardant Epoxy Molding Compound
- Void-free Plastic in DO-41 package
- 1.0 ampere operation at $T_A=55\text{ }^{\circ}\text{C}$ with no thermal runaway
- Exceeds environmental standards of MIL-S-19500/228
- Ultra fast switching for high efficiency



Mechanical Data

- Case: Molded plastic, DO-41
- Terminals: Axial leads, solderable per MIL-STD-202, Method 208
- Polarity: Band denotes cathode
- Mounting Position: Any
- Weight: 0.013 ounce, 0.3 gram

DO-41		
Dim	Min	Max
A	25.40	—
B	4.06	5.21
C	0.71	0.864
D	2.00	2.72
All Dimensions in mm		

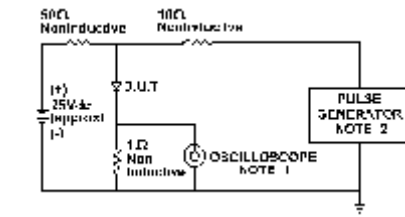
Maximum Ratings and Electrical Characteristics @ $T_A = 25^{\circ}\text{C}$ unless otherwise specified

Single phase, half wave, 60Hz, resistive or inductive load.
For capacitive load, derate current by 20%.

	UF100	UF101	UF102	UF104	UF106	UF108	UF1010	UNITS
Peak Reverse Voltage, Repetitive ; V_{RM}	50	100	200	400	600	800	1000	V
Maximum RMS Voltage	35	70	140	280	420	560	700	V
DC Blocking Voltage; V_R	50	100	200	400	600	800	1000	V
Average Forward Current, I_o @ $T_A=55\text{ }^{\circ}\text{C}$ 3.8" lead length, 60Hz, resistive or inductive load	1.0							A
Peak Forward Surge Current I_{FM} (surge) 8.3msec. single half sine-wave superimposed on rated load (JEDEC method)	30.0							A
Maximum Forward Voltage V_F @1.0A, 25 $^{\circ}\text{C}$	1.00		1.10		1.70			V
Maximum Reverse Current, @ Rated $T_J=25\text{ }^{\circ}\text{C}$	10.0							$\mu\text{g A}$
Reverse Voltage $T_J=100\text{ }^{\circ}\text{C}$	500							$\mu\text{g A}$
Typical Junction capacitance (Note 1) C_J	17.0							μF
Typical Junction Resistance (Note 2) $R_{\theta\text{KJA}}$	60.0							$^{\circ}\text{C/W}$
Reverse Recovery Time $I_F=.5A, I_R=1A, I_{rr}=.25A$	50	50	50	50	75	75	75	ns
Operating and Storage Temperature Range	-55 TO +150							$^{\circ}\text{C}$

NOTES:

1. Measured at 1 MHz and applied reverse voltage of 4.0 VDC
2. Thermal resistance from junction to ambient and from junction to lead length 0.375"(9.5mm) P.C.B. mounted



NOTE:1.Rise Time = 7ns max.
 Input Impedance = 1 megohm. 22pF
 2.Rise Time = 10ns max.
 Source Impedance = 50 Ohms

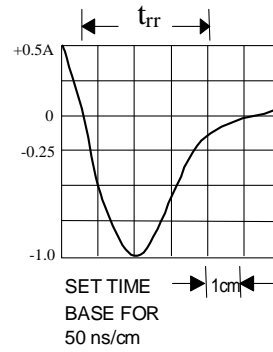


Fig. 1-REVERSE RECOVERY TIME CHARACTERISTIC AND TEST CIRCUIT DIAGRAM

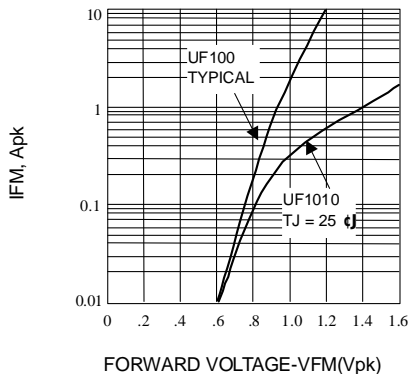


Fig. 2-FORWARD CHARACTERISTICS

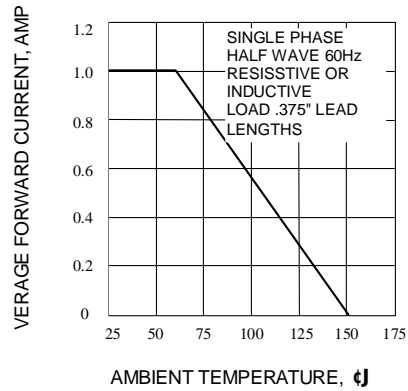


Fig. 3-FORWARD CURRENT DERATING CURVE

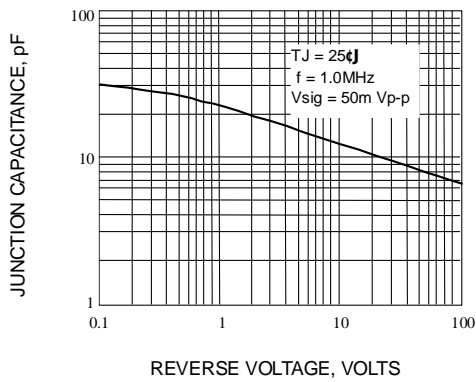


Fig. 4-TYPICAL JUNCTION CAPACITANCE

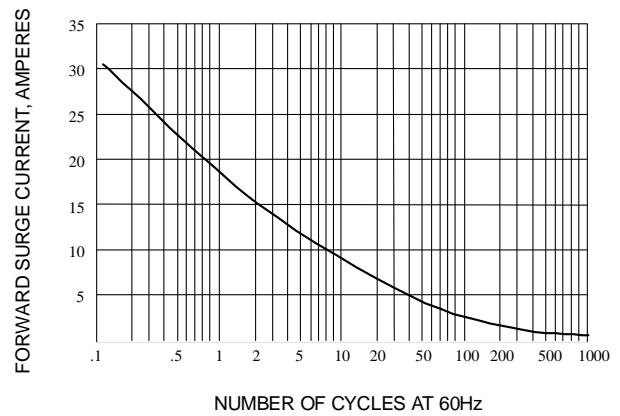


Fig. 5-PEAK FORWARD SURGE CURRENT